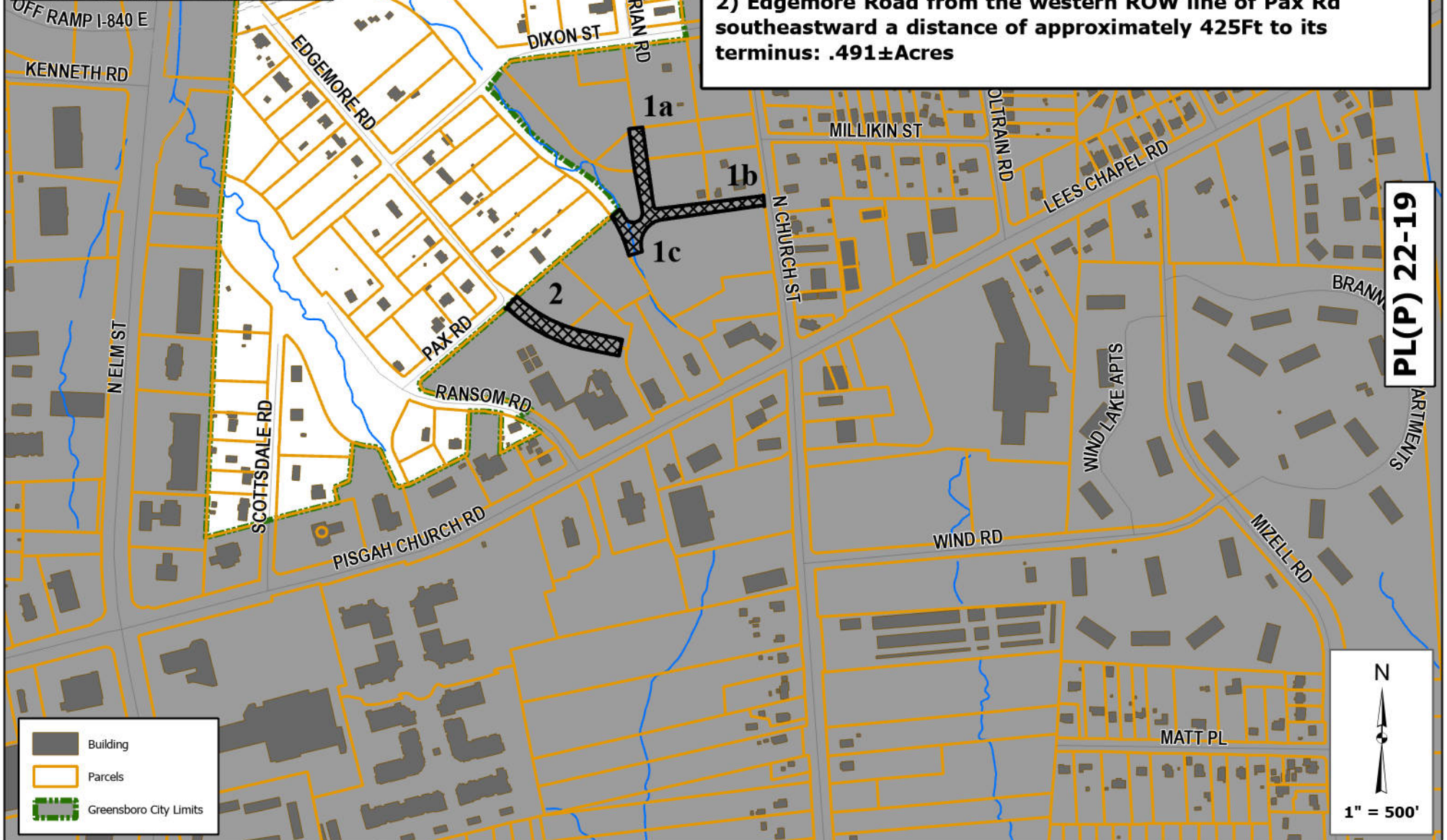


Proposed Street Closings

- 1a) Marian Road from the northern ROW line of David St northward a distance of approximately 310Ft to its terminus
- 1b) David Street from the western ROW line of N. Church St westward a distance of approximately 510Ft to the western ROW line of Windsor Rd
- 1c) Windsor Road from its current terminus northwestward a distance of approximately 165Ft to the northwest corner of Lot 352: 1.015±Acres
- 2) Edgemore Road from the western ROW line of Pax Rd southeastward a distance of approximately 425Ft to its terminus: .491±Acres



PL(P) 22-19